

Figure 1. Physical Photo of TECLD1A203D

## GENERAL FEATURES

- Combining TEC and Laser Controls in one Unit
- Configure and Read back All Analog Parameters through a Digital Port
- Configurable One Input Setting and One Output Monitoring Port for Analog Signals
- Controller Temperature Monitoring
- Compact Size and Simple Pin Out
- Complete Shielding
- 100 % lead (Pb)-free and RoHS compliant

## TEC CONTROL FEATURES

- Auto PID Compensation Network
- High Efficiency:  $\geq 90\%$
- Maximum Output Current Range:  $\pm 3.5A$
- Maximum Voltage Range:  $-V_{VPS} \sim V_{VPS} - 0.3V$
- Temperature Stability:  $\pm 0.001^{\circ}C$
- Real Time Monitoring on TEC Current, Voltage & Target Object Temperature

## LASER CONTROL FEATURES

- Low Noise:  $1.6\mu A_{P-P}$  @  $0.1Hz \sim 10Hz$
- Maximum Output Current with Heat Sink: 1A
- Maximum Output Voltage:  $V_{VPS} - 1V$
- High Absolute Accuracy:  $< 0.1\%$
- High Stability:  $< \pm 100ppm/^{\circ}C$
- Maximum Full Power Bandwidth: 1MHz
- Programmable Current Limit

## DESCRIPTION

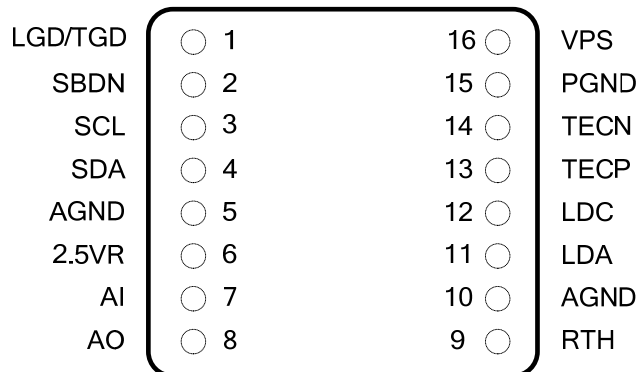
The TECLD1A203D combines a high efficiency TEC controller and a low noise laser driver into one

compact module without sacrificing the performance of each one. All the input analog parameters can be set, and the output analog signals can be read, by a digital port. Thus, the 2 pin digital port has saved numerous dedicated analog port pins as found in many conventional analog modules.

The TEC controller comes an auto PID compensation network, it saves the effort to tune the network for matching the thermal load, saves the cost and space for implementing the analog compensation network, and allows retuning the compensation network parameters for matching a different new thermal load. These analog parameters can be programmed through the digital port: Set-point temperature range, Set-point temperature, maximum cooling current, and maximum heating current. One of these parameters can be chosen and set by the analog input port, AI pin. These output parameters can be monitored by through the digital port: actual target object temperature, TEC current, TEC voltage, and TEC loop status. One of them can be chosen to be monitored directly through the analog output port, AO pin.

The laser controller features a linear mode low noise high speed laser driver. To protect the laser diode, it comes with a programmable current limit. Thus, in case the laser current setting pin exceeds the maximum current allowed by the laser diode, the current limit loop takes over the control and cap the current within the safe limit. These 2 analog input parameters can be set through the digital port. One of them can be chosen to be set directly through the analog port, AI pin. The actual laser's current and control loop status can be monitored by the digital port. The laser current be chosen to be monitored in real time through the analog output port, AO pin.

The controller has an control pin, it sets the controller to these modes: Shutdown, Standby, On, and PID Auto Tuning.



**TECLD1A203D**

Figure 2. Pin Names and Locations



Warning: The through hole type of modules can only be soldered manually on the board by a solder iron of < 310°C (590°F), not go through a reflow oven process.

SPECIFICATIONS

Table 1. Pin Function Descriptions

Table with 4 columns: Pin #, Name, Type, and Description. It lists 16 pins with their respective functions, such as digital outputs for temperature and shutdown control, serial communication pins (SCL, SDA), ground pins (AGND, GND, PGND), and power pins (VPS, TECP, TECN).

Table 1. Electrical characteristics.

Symbol	Parameter	Min	Max	Units
$f_{SCL}$	Clock Frequency, SCL		400	kHz
$t_{LOW}$	Clock Pulse Width Low	1.2		$\mu$ s
$t_{HIGH}$	Clock Pulse Width High	0.6		$\mu$ s
$t_{AA}$	Clock Low to Data Out Valid	0.1	0.9	$\mu$ s
$t_{BUF}$	Time the bus must be free before a new transmission can start(2)	1.2		$\mu$ s
$t_{HD,STA}$	Start Hold Time	0.6		$\mu$ s
$t_{SU,STA}$	Start Set-up Time	0.6		$\mu$ s
$t_{HD,DAT}$	Data In Hold Time	0		$\mu$ s
$t_{SU,DAT}$	Data In Set-up Time	100		ns
$t_R$	Inputs Rise Time		300	ns
$t_F$	Inputs Fall Time		300	ns
$t_{SU,STO}$	Stop Set-up Time	0.6		$\mu$ s
$t_{DH}$	Data Out Hold Time	50		ns

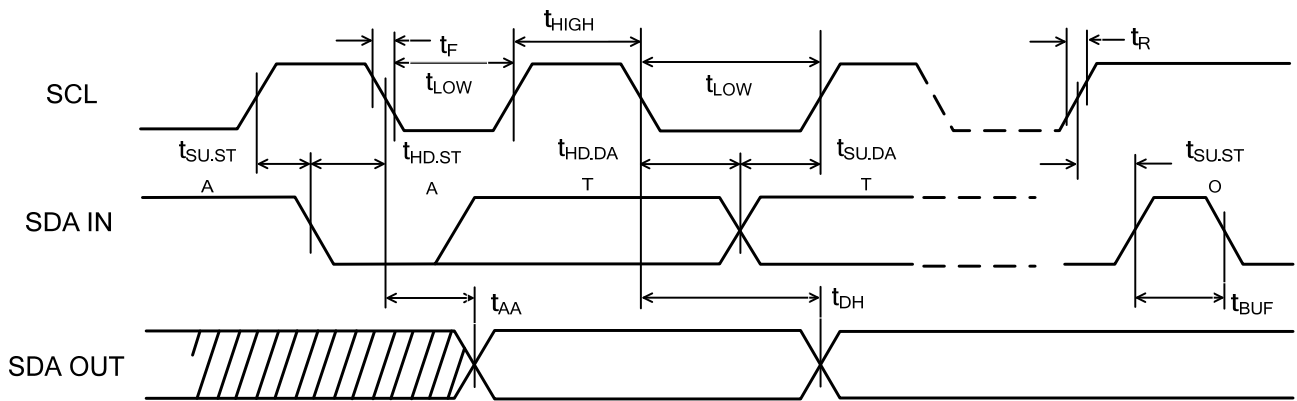


Figure 3. SCL: Serial Clock, SDA: Serial Data I/O

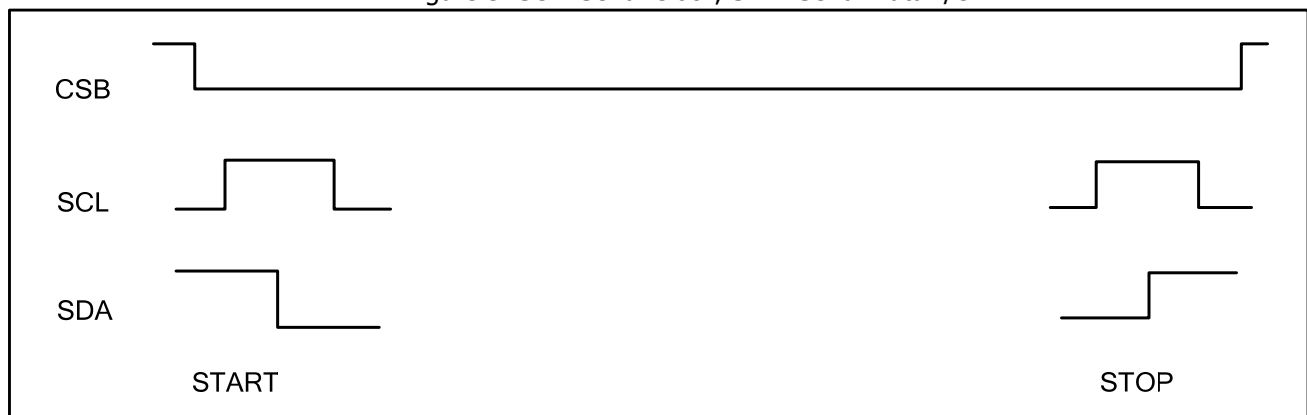


Figure. 4



Table 3

START	DECICE ADDRESS	R/W	ACK	REDA DATA WRITE DATA	STOP
	0000000 or 1000000			00000000	

Table 4. REGISTER MAP command

REGISTER	DESCRIPTION	R/W	SIZE	ADDR	DEFAULT VALUE
AI	Device control	R/W	7	0x00	0x0
AO	Device operation summary	R/W	7	0x80	0x80

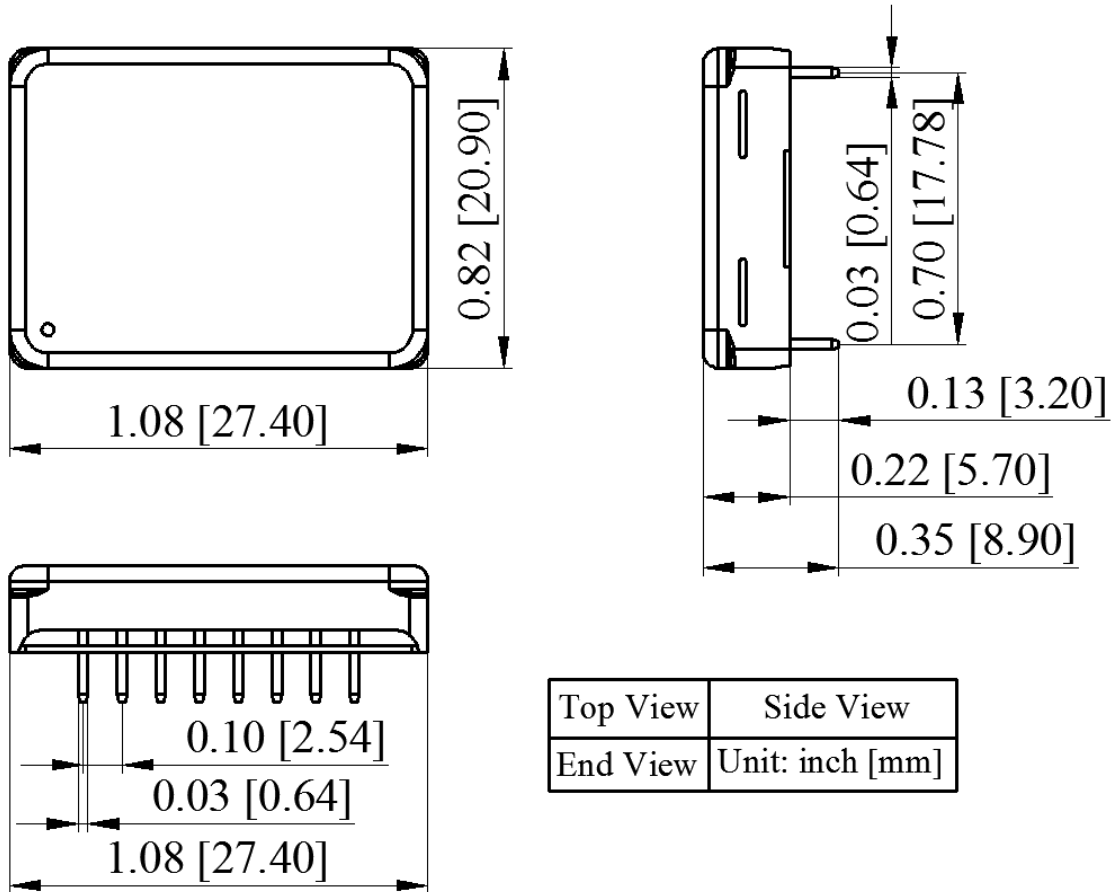
Table 5. AI REGISTER

BITS	SYMBOL	DESCRIPTION
B[0]	LIS	Laser current set. 0V to 2.5V sets the laser current from 0 to 1A linearly.
B[1]	TMS	Object set-point temperature input port. It is internally tied by a 500k resistor to the half value of the reference voltage, 1.25V. The open circuit voltage of this pin is thus 1.25V, corresponding to a set-point temperature of 25°C by using the default temperature network (with the set-point temperature range being from 15°C to 35°C).
B[2]	ILMC	TEC cooling limits
B[3]	ILMH	TEC heating limits
B[4]	VLM	TEC voltage limits
B[5]	NC	
B[6]	NC	
B[7]	NC	

Table 6. AO REGISTER

BITS	SYMBOL	DESCRIPTION
B[0]	LIO	Laser current output indication. 0V to 2.5V indicates the laser current from 0A to 1A linearly.
B[1]	LDA	Laser diode anode. Connect it to the anode of the laser diode. This pin is used to drive a laser of which the cathode is connected to the case and the case is connected to the ground.
B[2]	TMO	Actual object temperature. 0.1V to 2.5V indicates the default temperature network from 15°C to 35°C.
B[3]	VTEC	TEC Voltage Output.
B[4]	ITEC	TEC Current Output.
B[5]	CTMO	The driver internal temperature indication output.
B[5]	NC	
B[6]	NC	
B[7]	NC	

**MECHANICAL DIMENSIONS**



Top View	Side View
End View	Unit: inch [mm]

Figure. 5 Dimensions



## NOTICE

1. ATI warrants performance of its products for one year to the specifications applicable at the time of sale, except for those being damaged by excessive abuse. Products found not meeting the specifications within one year from the date of sale can be exchanged free of charge.
2. ATI reserves the right to make changes to its products or to discontinue any product or service without notice, and advise customers to obtain the latest version of relevant information to verify, before placing orders, that information being relied on is current and complete.
3. All products are sold subject to the terms and conditions of sale supplied at the time of order acknowledgment, including those pertaining to warranty, patent infringement, and limitation of liability. Testing and other quality control techniques are utilized to the extent ATI deems necessary to support this warranty. Specific testing of all parameters of each device is not necessarily performed, except those mandated by government requirements.
4. Customers are responsible for their applications using ATI components. In order to minimize risks associated with the customers' applications, adequate design and operating safeguards must be provided by the customers to minimize inherent or procedural hazards. ATI assumes no liability for applications assistance or customer product design.
5. ATI does not warrant or represent that any license, either express or implied, is granted under any patent right, copyright, mask work right, or other intellectual property right of ATI covering or relating to any combination, machine, or process in which such products or services might be or are used. ATI's publication of information regarding any third party's products or services does not constitute ATI's approval, warranty or endorsement thereof.
6. IP (Intellectual Property) Ownership: ATI retains the ownership of full rights for special technologies and/or techniques embedded in its products, the designs for mechanics, optics, plus all modifications, improvements, and inventions made by ATI for its products and/or projects.